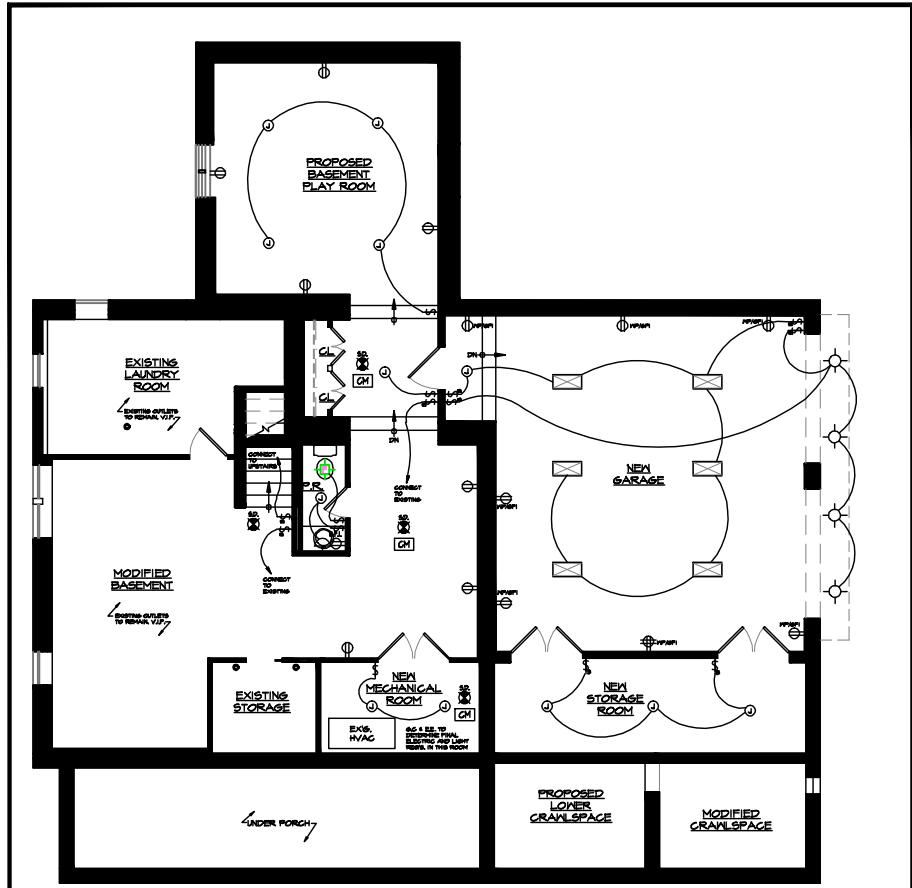


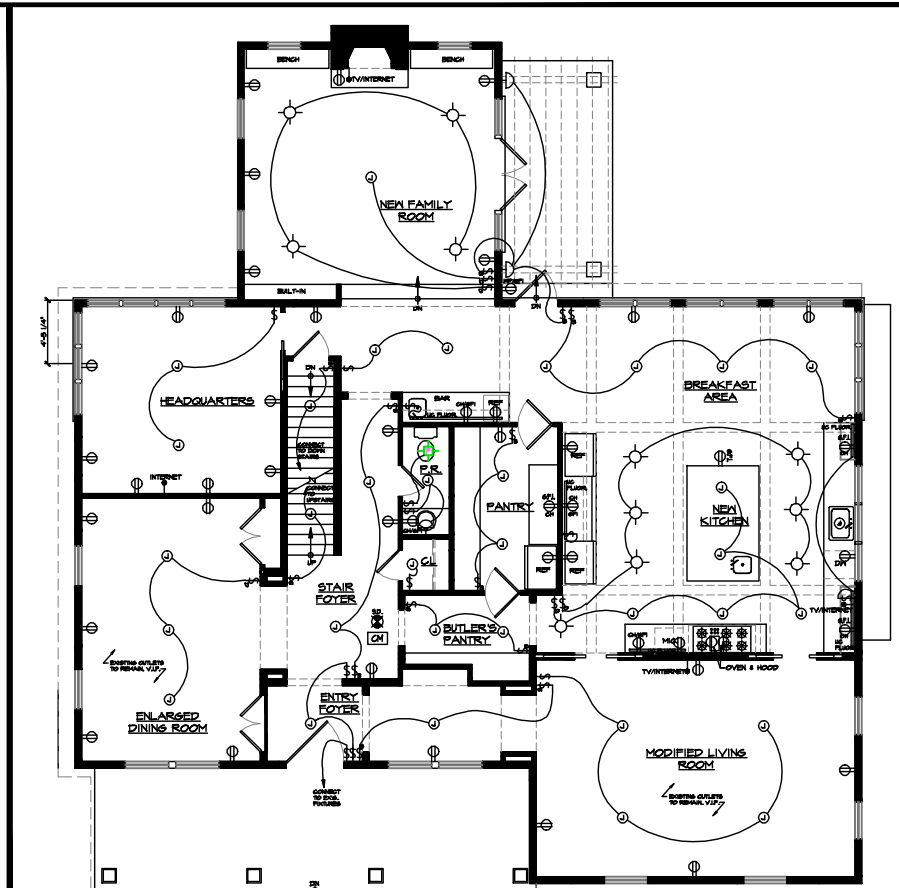
**KANIA RESIDENCE**

201 WASHINGTON AVENUE  
CHATHAM,  
NJ 07928

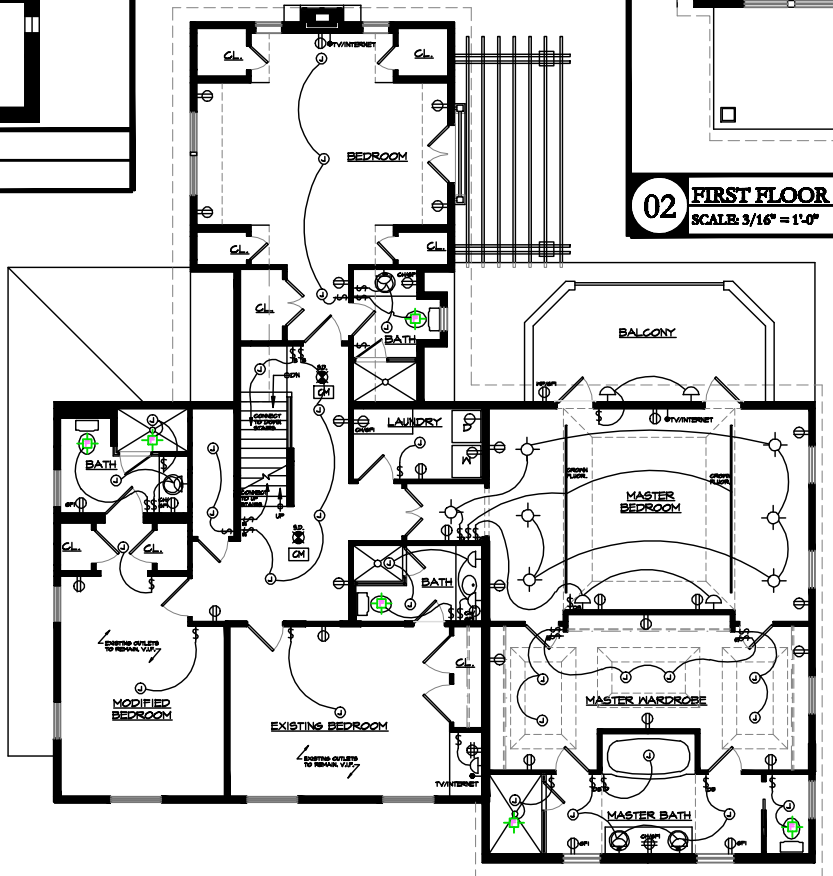


**01 BASEMENT ELECTRICAL PLAN**  
SCALE: 3/16" = 1'-0"

- ELECTRICAL SYMBOL LIST**
- RECESSED INCANDESCENT LIGHT FIXTURE (SEE LIGHTING FIXTURE SCHEDULE)
  - FLUORESCENT LIGHT, SEE MANUF. INSTRUCTIONS
  - J-BOX (CEILING LIGHT FIXTURE BY OWNER)
  - J-BOX (WALL SCONCE BY OWNER)
  - SINGLE POLE SWITCH, 'S' DENOTES THREE-WAY CONTROL, '4' DENOTES FOUR-WAY CONTROL, 'D' DENOTES A
  - DUPLEX OUTLET 80A / 220V.
  - DUPLEX OUTLET 15A / 125V.
  - DUPLEX OUTLET 20A / 125V, 'WPI' DENOTES GROUND FAULT INDICATOR IN ACCORDANCE IFC/NFPA 70, 'CH' DENOTES COUNTER HEIGHT.
  - WATER PROOF DUPLEX OUTLET 15BY 1V ISOLATED GROUND IN ACCORD. NFPA 70, 4 P.F. COVER
  - QUAD OUTLET 15BY-30A 1V ISOL. GROUND IN ACCORD. NFPA 70.
  - HEAT DETECTOR
  - FLUORESCENT LIGHT, SEE MANUF. INSTRUCTIONS.
  - HOT-WIRE BATTERY BACK-UP SMOKE DETECTOR IN ACCORD. IFC/NFPA 101.12.
  - CH CARBON MONOXIDE DETECTOR
  - TV/INTERNET CONNECTION
  - ELECTRIC GARAGE DOOR OPENER
  - FIRING
  - EXHAUST FAN



**02 FIRST FLOOR ELECTRICAL PLAN**  
SCALE: 3/16" = 1'-0"



**03 SECOND FLOOR ELECTRICAL PLAN**  
SCALE: 3/16" = 1'-0"

THIRD FLOOR ELECTRICAL PLAN  
- PROPOSED CHANGES TO THE THIRD FLOOR WILL NOT AFFECT THE EXISTING ELECTRICAL WIRING AND FIXTURES

REV.	DATE	ISSUE	REMARK
	12.06.15	FOR FILM	

**JOB #**  
**SET:**

- ELECTRICAL PLANS

TS HT  
DESIGN BY: HILAND HALL TURNER  
CHECK BY: NJ LIC. # 12074

**HILAND HALL TURNER & ASSOCIATES P.A.**  
**ARCHITECTS**  
2 CLAREMONT ROAD, BERENARDSVILLE, NJ 07924 908-496-0972

**A-12**